

MBP20HVIEC6A

### QUICK MAINTENANCE WITHOUT POWER INTERRUPTION

#### Easy switching to utility power during UPS maintenance

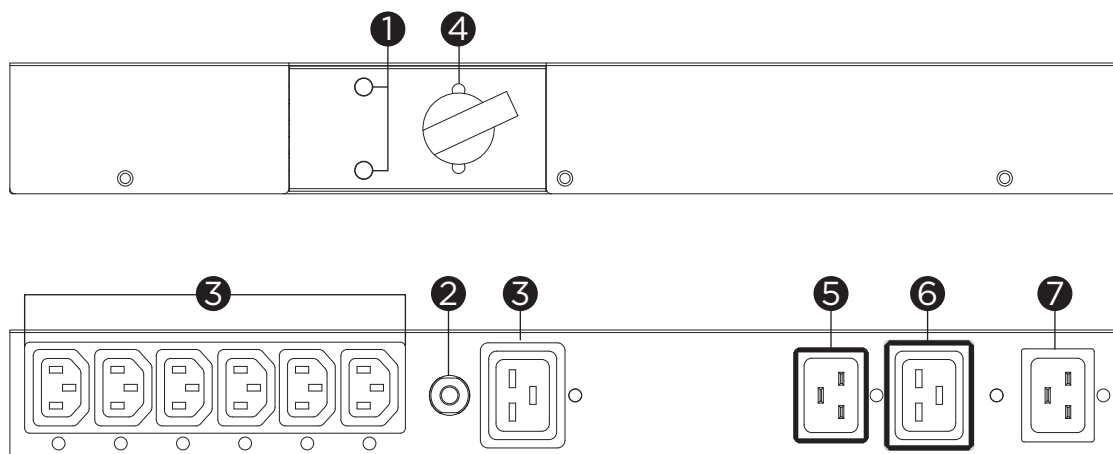
Designed for Uninterruptible Power Supply (UPS), the Maintenance Bypass PDU (MBP) Series allows utility power to bypass the UPS, so that users can perform quick and safe maintenance without having to shut down power system and connected equipment.

#### SERIES FEATURES

- > 1U Rackmount
- LED Status Indicator
- Metal Housing
- Retaining Clip Design
- Rack Ears Included
- Cascading Design

#### PRODUCT CALLOUTS

- 1 . LED Status Indicator
- 2 . Output Circuit Breaker
- 3 . AC Outlet
- 4 . Maintenance Bypass Switch
- 5 . "To UPS Output" Inlet
- 6 . "To UPS Input" Outlet
- 7 . "Utility Power" Inlet



MBP20HVIEC6A

## TECHNICAL SPECIFICATIONS

Model Name	MBP20HVIEC6A
<b>General</b>	
Compatible Models	OL1000ERTXL2U, OL1500ERTXL2U, OL2000ERTXL2U, OL3000ERTXL2U, OLS1000ERT2U, OLS1500ERT2U, OLS2000ERT2U, OLS3000ERT2U, OLS6000ERTXL3U, OLS10000ERTXL3U, OLS1000ERT2UA, OLS2000ERT2UA, OLS3000ERT2UA
<b>Input</b>	
Input Voltage Range (Vac)	220 - 240
Rated Input Current (A)	16
MBP Socket to Utility Power	IEC C20
MBP Socket to UPS Power Input	IEC C19
MBP Socket to UPS Outlet	IEC C20
<b>Output</b>	
Outlet Type	IEC C19 x 1, IEC C13 x 6
Typical Transfer Time (ms)	<4
Cascading	Yes, IEC 16A Output Socket
<b>Management</b>	
LED Indicators	Normal Status (Green Color), Bypass Status (Red Color)
<b>Physical</b>	
Form Factor	>1U Rackmount
<b>Physical Size</b>	
Dimensions (WxHxD) (mm.)	433 x 51 x 76
Weight (kg.)	1.3
<b>Environmental</b>	
Operating Temperature (°C)	0 - 40
Operating Relative Humidity (Non-condensing) (%)	0 - 90
<b>Certifications</b>	
Certifications*	CE
RoHS	Yes

\*Certifications may vary according to different regions. Visit [www.cyberpower.com](http://www.cyberpower.com) for more information.  
#All specifications are subject to change without notice.