

PDU20BHVIEC12R

ENTRY-LEVEL POWER DISTRIBUTION

Provides reliable power distribution for connected equipment

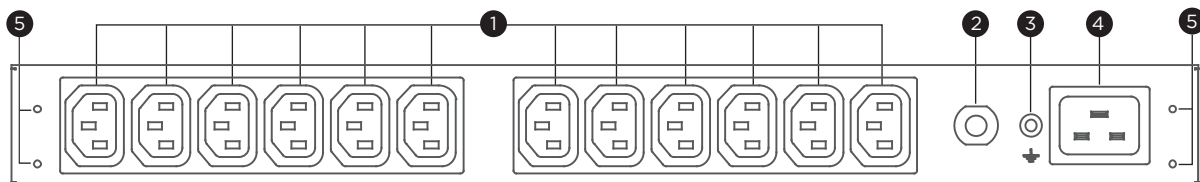
Ideal for server room and IT applications, the Basic PDU Series is a power distribution device that delivers electricity from a single source to multiple devices. The products feature overload protection, external site ground pin, industrial-grade metal housing, adjustable mounting brackets, long input power cord, and cord retention tray.

SERIES FEATURES

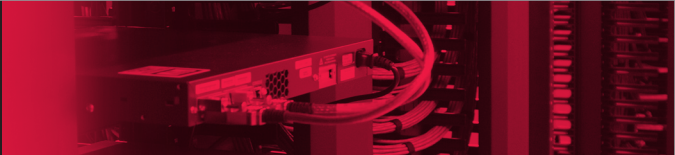
- Overload Protection
- Industrial-grade Metal Housing
- Adjustable Mounting Brackets
- Cord Retention Tray

PRODUCT CALLOUTS

- 1 . AC Outlets
- 2 . Circuit Breaker
- 3 . External Site Ground
- 4 . AC Inlet
- 5 . Cord Retention Tray Screw Holes



PDU20BHVIEC12R



TECHNICAL SPECIFICATIONS

Model Name	PDU20BHVIEC12R
Input	
Nominal Input Voltage (Vac)	200 - 240
Input Frequency (Hz)	50 / 60
Maximum Input Current (A)	16
Input Connector Type	IEC C20 x 1
Power Cord Length (m.)	3.05
Output	
Over Current Protection (Each Bank) (A)	16
Outlet(s) - Total	12
Outlet(s) - Rear	12
Outlet Type	IEC C13 x 12
Physical	
Installed Rack Height (U)	1
Cord Retention Tray	Yes
Physical Size	
Dimensions (WxHxD) (mm.)	445 x 44.5 x 38.1
Weight (kg.)	0.9
Environmental	
Operating Temperature (°C)	0 - 35
Operating Relative Humidity (Non-condensing) (%)	0 - 95
Certifications	
Certifications*	CE, UL60950
RoHS	Yes

*Certifications may vary according to different regions. Visit www.cyberpower.com for more information.
#All specifications are subject to change without notice.