



# Xiaomi Robot Vacuum X20 Max



EU: ID: 59071 SKU: BHR9220EU

EN: ID: 59068 SKU: BHR9217GB

US: ID: 59069 SKU: BHR9218US

---

## All-in-one station

- Auto dust emptying, 10s emptying, 2.5L dust bag, store debris up to 75 days\*
- Auto self-cleaning, 4L clean+3.8L sewage, covering up to 200m<sup>2</sup> of actual cleaning area\*
- Auto mop washing & drying, 55°C hot water mop pad washing\*, low noise hot air drying in 3 hours\*

---

## Sweep & Mopping

- Extendable mop arm design, up to 2mm-level edge cleaning\*
- Anti-tangle hair-cutting brush
- 8000Pa powerful suction fan blower
- Carpet detection with ultrasonic sensor with 10mm auto-lifting mop pads

---

## Navigation

- 120 ° wide-area structured light to identify obstacle
- Edge sensor to measure distance
- Advanced LDS laser navigation

---

## Your virtual home

- 5200mAh\* long-lasting battery, up to 120 minutes\* of battery life
- Support APP control allow users customize cleaning experiences
- Support Google & Alexa

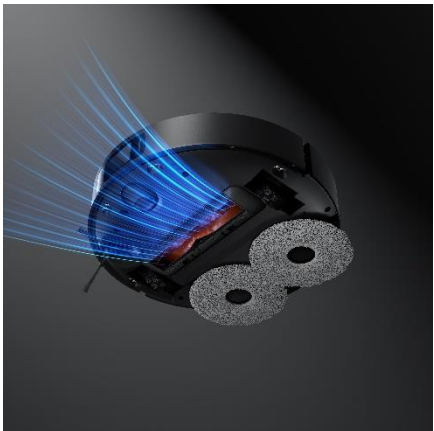
# Xiaomi Robot Vacuum X20 Max



All-in-one station



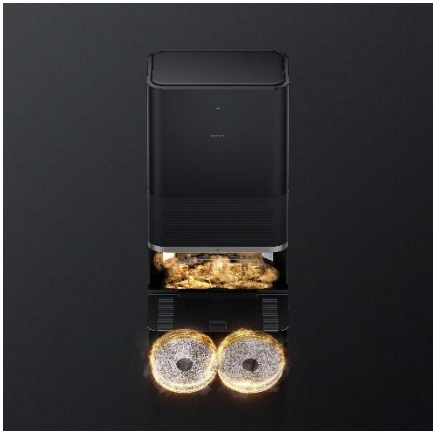
Auto carpet detection & Auto-lifting mop pads



8000Pa powerful suction fan blower



Extendable mop arm



Hot air mop drying + Hot water mop pad washing



Anti-tangle hair-cutting brush

# Xiaomi Robot Vacuum X20 Max



## Specification

Navigation System	LDS
Obstacle avoidance	Obstacle avoidance
Mopping	Dual mopping
Auto Mop Washing	Hot water
Auto Dust Emptying	√
auto-lifting mop pads	√
air drying	Hot Air
Battery	5200mAh
powerful suction fan blower	8000Pa
Dust box capacity of sweeper	290mL
Fresh/Dirty Water Tank	4L /3.8L
Disposable Dust Bag	2.5L
APP	Track Cleaning Progress Selected Room Cleaning Zoned cleaning Virtual Wall Multi-floor Maps 4 cleaning modes
Google/Alexa	√

**\*75 days:** In tests carried out in a 120m household environment, where lived a three-person family with one pet, and on a robot vacuum cleaning once a day before returning to the base station for dust collection, the dust bag waste volume is measured every five days and the dust bag is filled ≥ 75 days without emptying. Data comes from Xiaomi Internal Labs. Actual results may vary.

**\*3 hours hot air drying:** The drying temperature, drying time, drying rate, etc. are tested in the environment of 25°C and 55%RH. Result shows that the mop drying rate is above 99% after 3 hours of continuous drying. Data comes from Xiaomi Internal Labs. Actual results may vary depending on different using scenarios.

**\*2mm:** The robot vacuum is set to Vacuuming and Mopping mode and the Mop Swing is turned on for straight-line running test along a dusted wall. The distance of dust from the edge after mopping is measured and the minimum distance ≤ 2mm. Data comes from Xiaomi Internal Labs. Actual results may vary.

**\*55°C:** In standard test environment, the water temperature for mop washing is set to Hot level. The temperature at the water outlet is tested once per second and the result is about 55°C. Data comes from Xiaomi Internal Labs. Actual results may vary depending on different voltage and using scenarios.

**\*200m':** When the robot vacuum is fully charged, and is set to Mopping under Standard mode and Daily mop washing for water output, the test outcomes show that the completely filled clean water tank can wet mop more than 200m of actual cleaning area. Data comes from Xiaomi Internal Labs, actual results may vary.

**\*5200mAh** is the battery's nominal capacity.

**\*120 minutes of battery life:** When set to Vacuuming and Mopping under Standard mode, and fully charged. Data comes from Xiaomi Internal Labs. Actual results may vary.